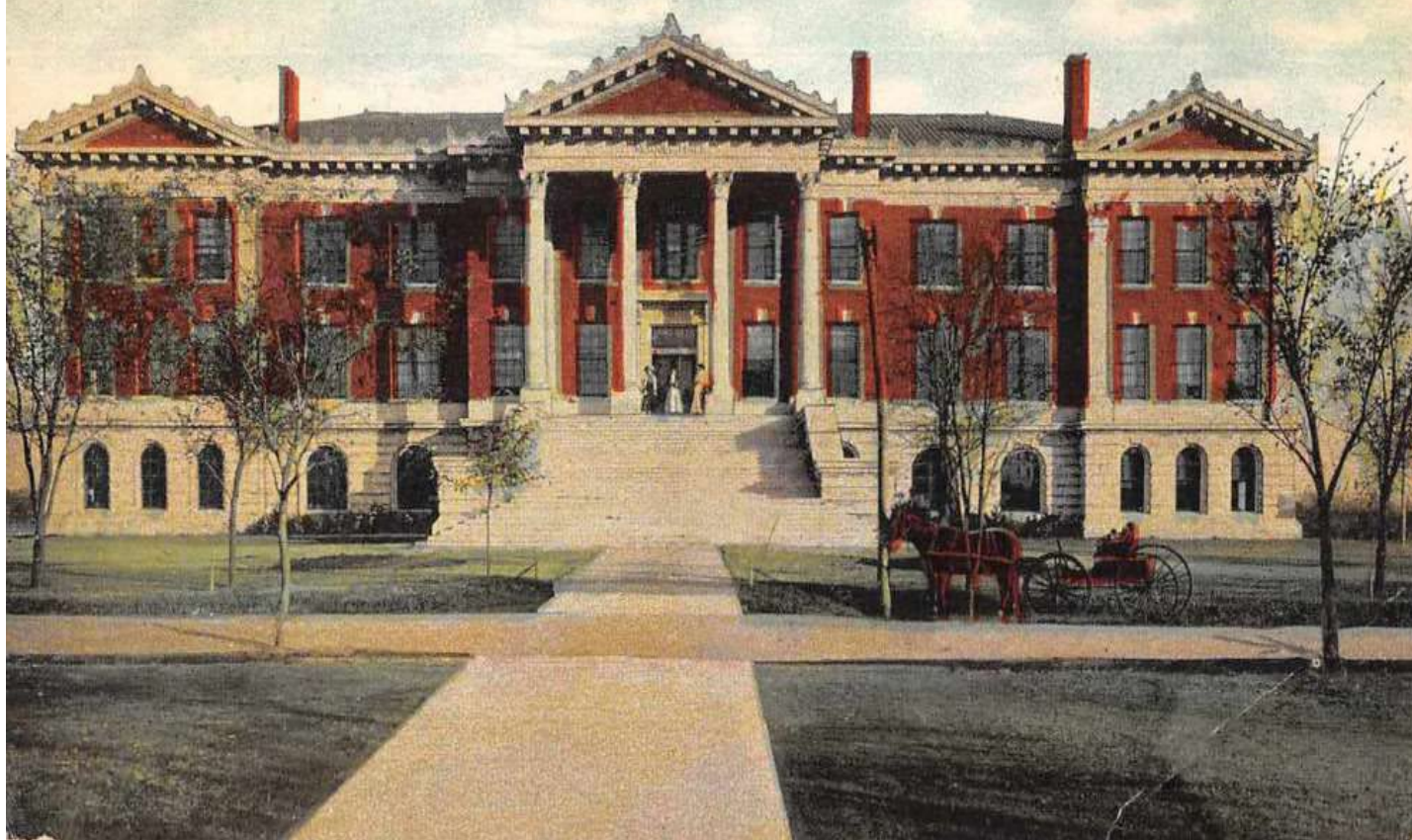


Morrill Hall, A. & M. College, Stillwater, Okla.

A3443



# ENGLISH GRADUATE GUIDELINES

MA IN ENGLISH TESOL OPTION

2025 – 2026

*Graduate Office: 308 Morrill Hall*

*Email: [englishgrad@okstate.edu](mailto:englishgrad@okstate.edu)*

## Graduate Program Personnel

### Graduate Director

Lindsay Wilhelm  
405-744-7691  
314A Morrill Hall  
[lindsay.wilhelm@okstate.edu](mailto:lindsay.wilhelm@okstate.edu)

### Assistant to Graduate Director

Brenda Maxwell  
405-744-9469  
308 Morrill Hall  
[brenda.maxwell@okstate.edu](mailto:brenda.maxwell@okstate.edu)

Graduate Office email: [englishgrad@okstate.edu](mailto:englishgrad@okstate.edu)

### English Department Head

Jeff Menne  
405-744-6140  
205B Morrill Hall  
[jeff.menne@okstate.edu](mailto:jeff.menne@okstate.edu)

### Associate Department Head

Steph Link  
405-744-6232  
109D Morrill Hall  
[steph.link@okstate.edu](mailto:steph.link@okstate.edu)

## Program Directors

### TESL/Linguistics

Nicole Tracy-Ventura  
405-744-6236  
211B Morrill Hall  
[nicole.tracy-venturar@okstate.edu](mailto:nicole.tracy-venturar@okstate.edu)

### Rhetoric and Writing Studies

An Cheng  
405-744-9470  
302B Morrill Hall  
[an.cheng@okstate.edu](mailto:an.cheng@okstate.edu)

### Literature

Lisa Hollenbach  
405-744-6227  
311C Morrill Hall  
[lisa.hollenbach@okstate.edu](mailto:lisa.hollenbach@okstate.edu)

### Creative Writing

Sarah Beth Childers  
405-744-6226  
109E Morrill Hall  
[sarah.beth.childers@okstate.edu](mailto:sarah.beth.childers@okstate.edu)

### Screen Studies

Graig Uhlin  
405-744-6261  
311D Morrill Hall  
[grraig.uhlin@okstate.edu](mailto:grraig.uhlin@okstate.edu)

## Graduate Studies Committee

The Graduate Studies Committee consists of a representative from each of three areas:

### Area A: Literature

Chelsea Silva  
405-744-6218  
201C Morrill Hall  
[chelsea.silva@okstate.edu](mailto:chelsea.silva@okstate.edu)

### Area B: TESOL/Linguistics, Rhetoric & writing Studies

An Cheng  
405-744-9470  
302B Morrill Hall  
[an.cheng@okstate.edu](mailto:an.cheng@okstate.edu)

### Area C: Screen Studies, Creative Writing

Gene Kwak  
405-744-6837  
309A Morrill Hall  
[gkwak@okstate.edu](mailto:gkwak@okstate.edu)

The Graduate Director is a non-voting member.

## The Graduate Faculty

See the English Department online faculty directory and telephone information:

<https://english.okstate.edu/people/faculty-profiles>

**Michael Amory, PhD**

[michael.amory@okstate.edu](mailto:michael.amory@okstate.edu)

Pennsylvania State University

Applied Linguistics

TESOL

**Gregory Brennen, PhD**

[gregory.brennen@okstate.edu](mailto:gregory.brennen@okstate.edu)

Duke University

Composition

Serial Media

British Literature

**Kathleen Burns, PhD**

[kathleen.burns@okstate.edu](mailto:kathleen.burns@okstate.edu)

Duke University

American Studies

Literature 19<sup>th</sup> through 21<sup>st</sup> Centuries

**An Cheng, PhD**

[an.cheng@okstate.edu](mailto:an.cheng@okstate.edu)

Pennsylvania State University

Phonetics, Phonology,

Writing Theory & Practices

Applied Linguistics

**Sarah Beth Childers, MFA**

[sarah.beth.childers@okstate.edu](mailto:sarah.beth.childers@okstate.edu)

West Virginia University

Creative Writing: Nonfiction

**Stephanie Choi, MFA**

[stephanie.choi@okstate.edu](mailto:stephanie.choi@okstate.edu)

University of Utah

Creative Writing – Poetry

**Dinah Cox, PhD**

[dinah.cox@okstate.edu](mailto:dinah.cox@okstate.edu)

Oklahoma State University

Creative Writing: Fiction

**Lisa Hollenbach, PhD**

[lisa.hollenbach@okstate.edu](mailto:lisa.hollenbach@okstate.edu)

University of Wisconsin – Madison

American Poetry Post 1900

**Shelby Johnson, PhD**

Vanderbilt University

[Shelby.l.johnson@okstate.edu](mailto:Shelby.l.johnson@okstate.edu)

English Literature

**Edward Jones, PhD**

[edward.jones@okstate.edu](mailto:edward.jones@okstate.edu)

Ohio University

Renaissance British Literature

Milton

**Gene Kwak, MFA**

[gene.kwak@okstate.edu](mailto:gene.kwak@okstate.edu)

University of Massachusetts

Creative Writing: Fiction

**Lisa Lewis, PhD**

[lisa.lewis@okstate.edu](mailto:lisa.lewis@okstate.edu)

University of Houston

Creative Writing: Poetry

**Stephanie Link, PhD**

[steph.link@okstate.edu](mailto:steph.link@okstate.edu)

Iowa State University

TESOL

Applied Linguistics

**Sara Loss, PhD**

[sara.loss@okstate.edu](mailto:sara.loss@okstate.edu)

University of Minnesota

Linguistics

**Reanae McNeal, PhD**

[reanae.mcneal@okstate.edu](mailto:reanae.mcneal@okstate.edu)

Texas Women's University

Multicultural Women's and Gender Studies

**Jeff Menne, PhD**

[jeff.menne@okstate.edu](mailto:jeff.menne@okstate.edu)

Vanderbilt University

Screen Studies – American

**Timothy Murphy, PhD**

[tim.murphy@okstate.edu](mailto:tim.murphy@okstate.edu)

UCLA

Post 1900 Literature and Cultural Studies  
Critical Theory

**Aimee Parkison, MFA**

[aimee@okstate.edu](mailto:aimee@okstate.edu)

Cornell University

Creative Writing: Fiction

**Reva Sias, PhD**

[reva.e.sias@okstate.edu](mailto:reva.e.sias@okstate.edu)

Syracuse University

Composition and Cultural Rhetoric

**Chelsea Silva, PhD**

[chelsea.silva@okstate.edu](mailto:chelsea.silva@okstate.edu)

University of California – Riverside

British Literature and Culture Pre-1500's

**Stacy Takacs, PhD**

[stacy.takacs@okstate.edu](mailto:stacy.takacs@okstate.edu)

Indiana University

American Cultural Studies  
Television Studies

**Nicole Tracy-Ventura, PhD**

[nicole.tracy-ventura@okstate.edu](mailto:nicole.tracy-ventura@okstate.edu)

Northern Arizona University

Applied Linguistics  
TESOL

**Graig Uhlin, PhD**

[graiq.uhlin@okstate.edu](mailto:graiq.uhlin@okstate.edu)

New York University

Screen Studies

**Lindsay Wilhelm, PhD**

[lindsay.wilhelm@okstate.edu](mailto:lindsay.wilhelm@okstate.edu)

UCLA

British and 19<sup>th</sup> Century Anglophone Literature

# English Graduate Guidelines: MA in English – Option in TESOL

## Table of Contents

<b>Graduate Program Personnel .....</b>	<b>1</b>
<b>Application and Admission .....</b>	<b>6</b>
Application Deadlines .....	6
Application Qualifications and Required Materials .....	6
English Proficiency (non-native speakers) .....	7
Changing Areas of Specialization .....	7
<b>Graduate College Rules and Regulations .....</b>	<b>7</b>
<b>MA Timeline .....</b>	<b>8</b>
First Year .....	8
Second and Third Years .....	8
<b>Advisor and Advisory Committee .....</b>	<b>8</b>
Departmental Advisory Committee Form .....	8
Advisor .....	9
Advisory Committee .....	9
Committee Changes .....	9
<b>Plan of Study .....</b>	<b>9</b>
Planning Meeting .....	9
Creative Component .....	9
Submitting the Plan of Study .....	9
Plan of Study Changes .....	9
Ten Year Rule .....	9
Checklist for Plan of Study .....	10
<b>Course Requirements .....</b>	<b>10</b>
Thesis Plan .....	10
Non-Thesis Plan .....	10
Evaluation .....	11
Required Courses .....	11
Required Course Listing (18 hours) .....	11
Methods Course for Teaching Assistants .....	12
Required Hours at 5000/6000 Level .....	12
ENGL 5990: Special Problems .....	12
Transfer Hours .....	12

Independent Study .....	12
<b>Language Requirement.....</b>	<b>13</b>
Methods of Demonstrating Knowledge .....	13
Accommodations.....	13
<b>Thesis (optional) .....</b>	<b>14</b>
Prerequisites .....	14
Traditional Thesis Format .....	14
Thesis Committee .....	14
Prospectus.....	14
Reading Procedure .....	14
Deadlines.....	14
Style .....	15
Defense Copy (final draft) .....	15
Final Copy.....	15
Thesis Defense .....	15
Intent to Defend Form .....	15
Defense .....	15
<b>Graduation.....</b>	<b>15</b>
<b>Length of Financial Support for Teaching Assistants .....</b>	<b>15</b>
<b>Ineligibility for the MA Degree.....</b>	<b>16</b>
<b>Appeals and Petitions .....</b>	<b>16</b>
Consultation with English Department Graduate Coordinator.....	16
English Department Graduate Faculty Hearing.....	17

# English Graduate Guidelines:

## MA in English – Option in TESOL

The English Department at Oklahoma State University offers a comprehensive program leading to an MA in English with an option in Teaching English as a Second Language. The TESOL program is designed to provide students with the skills necessary to teach English to non-native speakers in a variety of situations, e.g., teaching English as a foreign language in an overseas school, college, or university; teaching English as a second language to international students studying in intensive English programs in the U.S.; or teaching English to bilingual/bicultural students in American public school systems and adult education programs.

The TESOL curriculum is designed to provide professional training in theoretical and applied linguistics, methods of teaching English as a second language, materials development, and second language testing. Students also participate in a supervised internship program in ESL. The elective courses are interdisciplinary in nature and are chosen by students and their advisory committees in accordance with particular interests and needs.

The MA in English with an option in TESOL consists of 30 credit hours (thesis option) or 34 credit hours (non-thesis option). In addition to these hours, students must fulfill the language requirement and successfully complete and defend an MA e-Portfolio. A description of the degree requirements and regulations appears on the following pages.

Students must complete all requirements for the MA degree within seven years from their first enrollment in the courses for the MA program

### Application and Admission

Admission to the MA program in English with Option in TESOL requires a Bachelor of Arts or Bachelor of Science degree from an accredited institution of higher learning. Other qualifications and application materials appear below. Applicants should be mindful that meeting the minimum standards for admission *does not* guarantee admission.

### Application Deadlines

- **Fall** – January 5 priority deadline with March 1 final deadline
- **Spring** – October 15<sup>th</sup>
- **Note:** Deadline for International students applying for Spring Admission is **August 1**.

All students will apply through the Graduate College website: <https://gradcollege.okstate.edu/apply/>. All of the required documents and materials will be uploaded to the electronic application

### Application Qualifications and Required Materials

- **GPA** Applicants should have an undergraduate grade-point average of 3.0 on a 4.0 scale, particularly in English courses.
- **Language** Applicants must have six credit hours of course work in a Language other than English with grades of “B” or better. Applicants who do not meet this requirement must complete two semesters of language work, receiving grades of “B” or better prior to defending the thesis/e-Portfolio. Non-native speakers of English are exempt from this requirement.



- **Recommendations** Applicants must submit two letters of recommendation
- **Statement of Purpose** Applicants must submit a written statement of approximately 250 words that identifies a proposed area of study, reasons for undertaking graduate study in this area, relevant work experience, and future career plans.
- **Writing Sample** Applicants must submit a writing sample: a 7-to-15-page paper written for an upper-level course in an appropriate area of study.

**The GRE exam is not required but students who have GRE scores are encouraged to submit them.**

### **English Proficiency (non-native speakers)**

**Please note:** The English Department admission requirements are **HIGHER** than Graduate College admission requirements. **\*\*We Do Not Accept Duolingo English Proficiency results**

Applicants who are not native speakers of English *must* submit current scores from one of the following:

- **TOEFL ibt** – minimum overall score of 100, with minimum reading and writing subskill scores of 26
- **TOEFL ibt** - new scoring system beginning in January 2026 – minimum overall of 5 with reading and writing scores minimum of 5
- **IELTS** - minimum overall score of 7.0, with minimum reading and writing band scores of 7.0

Please refer to the English Department website at: <http://english.okstate.edu/graduate-studies/applications-and-admissions>, for more information.

### **Changing Areas of Specialization**

Students are admitted to the MA program in English with TESOL Option. If a student wishes to move from one area of specialization to another (such as from MA with Professional Writing Option to the general MA in English) the student must submit an application to the English Graduate Office and receive approval for that change from the Admissions Committee. The application must include a new statement of purpose and a new writing sample, which will be considered along with the rest of the student's graduate file. Since this application will be an internal English Department matter, students will not have to pay an application fee. If the Admissions Committee does not grant the request, the student will still have the option of continuing in the area of specialization into which he or she was admitted.

### **Graduate College Rules and Regulations**

There are many rules and regulations affecting graduate enrollment, tenure, examinations, theses, and dissertations that are made by the Graduate Faculty of Oklahoma State University rather than the English Department. Among the rules students should familiarize themselves with are those governing academic dishonesty or misconduct, especially those dealing with plagiarism. It is the student's responsibility to become informed about all English Department, Graduate College, and University regulations.

The Oklahoma State University Catalog should be read closely by all those who are considering, or participating in, graduate studies in English at Oklahoma State University. Copies are available online at: <https://registrar.okstate.edu/University-Catalog>.



## MA Timeline

### First Year

By the end of the second semester of enrollment (excluding summer sessions) the student must have:

- Chosen an **advisor** and **advisory committee** and submitted the Departmental Advisory Committee Form to the English Graduate Office (<http://english.okstate.edu/graduate-studies/graduate-forms>)
- Met with the committee and discussed the **plan of study**, which should then be filed online at the Graduate College (<https://gradcollege.okstate.edu/resources/current-student-resources.html>)

### Second and Third Years

Before being eligible to graduate, students must have:

- Completed all required coursework, for a total of 24 credit hours (see “[Course Requirements](#)”).
- Completed the **language requirement** (if not completed during the first year) and submitted appropriate documentation to the English Graduate Office. The language requirement must be completed before defending a thesis. (see “[Language Requirement](#)”)
- Filed a revised Plan of Study (if applicable) at the beginning of the intended semester of graduation. <https://gradcollege.okstate.edu/resources/current-student-resources.html>
- Completed the **MA e-Portfolio** and **Creative Component** or **Thesis** and **Thesis Defense**.
  - MA candidates writing a thesis should submit a prospectus (approx. 1000 words) to the English Graduate Office no later than the first semester they are enrolled in thesis hours.
  - Submit a completed Intent to Defend form before the end of the second week of classes in the semester in which the defense is to be held (<http://english.okstate.edu/graduate-studies/graduate-forms>).
  - Write and submit the thesis according to the format guidelines in the current Graduate College Manual (<https://gradcollege.okstate.edu/resources/current-student-resources.html>).
  - Submit the Results of Final Defense Form to the English Graduate Office and the Graduate College immediately following the defense (<http://english.okstate.edu/graduate-studies/graduate-forms>).
- Completed the Application for Graduation (<https://gradcollege.okstate.edu/resources/current-student-resources.html>). If your graduation is delayed, you must fill out a Diploma Application Extension Form at <http://registrar.okstate.edu/Forms>.
- Meet all other Graduate College deadlines and requirements.

## Advisor and Advisory Committee

All graduate students select an individual advisor and an advisory committee to guide them in completing their degrees.

### Departmental Advisory Committee Form

After you have formed an advisory committee, submit the Departmental Advisory Committee Form (<http://english.okstate.edu/graduate-studies/graduate-forms>) to the English Graduate Office.

### Advisor

Students are encouraged to choose an advisor by the end of their first semester of course work, but if that is not possible, students should select an advisor by the end of their first year of graduate study. An advisor of an MA student may be any member of the graduate faculty of the English Department; in most cases, the advisor has expertise in the subject matter area in which the student plans to specialize.

### Advisory Committee

The advisory committee will normally consist of the student's major advisor as committee chair and at least two additional members of the English Department's graduate Faculty.

### Committee Changes

To change an advisor and or advisory committee, go to:

<https://gradcollege.okstate.edu/resources/current-student-resources.html> and then to Plan of Study link

### Plan of Study

A plan of study is a listing of course work the student intends to take for completion of the degree and as estimated time schedule. The student must develop the plan with his/her advisor and advisory committee. The Graduate College requires MA students to file a plan of study with the Graduate College before completing the 17<sup>th</sup> hour of graduate credit. A hold is automatically placed on the registration of any student attempting to enroll beyond 17 hours who does not have a plan of study approved by the Graduate College.

### Time to Degree

Graduate College guidelines stipulate the maximum amount of time that students may take to finish their degree, which varies according to degree or certificate program. Information on time to degree requirements and petitions for extension may be found here: <https://catalog.okstate.edu/university-academic-regulations/#text>

### Planning Meeting

***Prior to the end of the second semester of full-time enrollment***, students must schedule a meeting with their advisory committee. During that meeting, the student and their committee will discuss the student's preparation, professional goals, and the plans for graduate study. The student and committee should agree upon:

- A Plan of Study
- Fulfillment of the language requirement
- Tentative plans for the MA e-Portfolio
- Tentative plans for the thesis

### Creative Component

The course used as a creative component must be designated with an asterisk on the plan of study.

***\*Please give this information to the English Graduate Office.***

### Submitting the Plan of Study

Following the plan of study meeting, the student will complete and submit the plan of study online at:

<https://gradcollege.okstate.edu/resources/current-student-resources.html> and the advisory committee and the Graduate Director will sign electronically.

### Plan of Study Changes

Changes to the plan of study can be made with the approval of the advisory committee. A revised plan should be submitted to the Graduate College *at the beginning of the intended semester of graduation*.

Changes can be made here: <https://gradcollege.okstate.edu/resources/current-student-resources.html>.

### Checklist for Plan of Study

- Minimum of 30 hours for thesis option, or 34 hours for non-thesis option, beyond baccalaureate degree
- Minimum of 16 hours in English
- At least 21 hours of course work at the 5000/6000 level at OSU
- All courses must be taken for graduate credit
- No more than 9 hours of course work taken as a special student or transferred from another institution
- No course work may be included if it was previously used to complete requirements for another degree.
- The plan of study must be signed electronically by the advisor, committee members and the Graduate Director.

**Students are responsible for resident tuition for all courses taken in excess of this limit and for all fees.**

### Course Requirements

The MA in English with an Option in TESOL offers two course requirement plans: thesis and non-thesis. The following requirements govern these options.

#### Thesis Plan

Students take 30 semester hours, including six credit hours of thesis.

#### Non-Thesis Plan

Students take 34 semester hours including a one credit-hour Independent Study course with a faculty member. As part of the independent study, students produce a creative component. The creative component is an article length paper, which may be a research or pedagogical project. In addition, students compile an electronic e-Portfolio in which they demonstrate they have met the MA TESOL/Linguistics Program objectives through their coursework and professional experiences. This e-Portfolio must minimally include the following:

- An introduction to the e-Portfolio with analysis of the student's own development through the MA TESOL/Linguistics Program
- Resume/CV
- Teaching Philosophy
- An exemplary piece of scholarship, which may be used as the creative component.

***An e-portfolio defense will consist of a public oral examination by the advisory committee.***

### Evaluation

The student makes a twenty-to-thirty-minute presentation of the e-Portfolio and then answers questions from the advisory committee. Following the defense, the e-Portfolio is evaluated as:

- Pass with distinction
- Pass
- Pass pending revisions
- Revise and resubmit
- Fail

Should the e-Portfolio be rated as "pass pending revisions" or "revise and resubmit", the committee should specify what revisions are needed and when these revisions must be completed. A "pass pending revisions" e-Portfolio would then be assessed as a "pass" following approval by a designated committee member or members. A "revise and resubmit" e-Portfolio would then be assessed as a "pass" or "fail" by the full advisory committee.

**Before defending an e-Portfolio the student must have:**

- Fulfilled the language requirement
- Maintained a GPA 3.0 or above on all graduate course work. ***All courses carrying graduate credit, including transfer hours on the approved Plan of Study, will be calculated in this grade point average***
- Files an approved Plan of Study with the Graduate College  
<https://gradcollege.okstate.edu/resources/current-student-resources.html>

**Required Courses**

Regardless of whether the opt for the thesis or non-thesis approach, Professional Writing students are expected to complete 18 semester hours of required course work and to fulfill total hour requirements from among the elective courses available. The proposed program of work is planned in consultation with the student's advisory committee.

**Required Course Listing (18 hours)****TESOL Core Courses:**

- **ENGL 5243** Teaching English as a Second Language
- **ENGL 5313** Internship in TESOL
- **ENGL 5333** Seminar in TESOL: Second Language Testing

**Linguistics Core Courses:**

- **ENGL 5123** Approaches to Language Acquisition
- **ENGL 5130** Studies in English Grammar
- **ENGL 5143** Descriptive Linguistics

**Creative Component:**

- **ENGL 5210** Directed Study (one credit hour)

**Thesis:**

- **ENGL 5000** Thesis (six credit hours)

**Sample Electives:****Languages and Linguistics:**

- **ENGL 5133** Phonetics and Phonology
- **ENGL 5140** Seminar in Linguistics (various topics)
- **ENGL 5153** Syntax
- **ENGL 5173** Sociolinguistics
- **ENGL 6410** Topics in Linguistics (various topics)
- **PSYC 6393** Psychology of Language

**Teaching Methodology:**

- **ENGL 5013** Introduction to Graduate Studies (TESOL)
- **ENGL 5120** Studies in TESOL
- **ENGL 5213** Content/Methods for Teaching Composition
- **ENGL 5223** Teaching Technical and Business Writing
- **ENGL 6420** Topics in Second Language Acquisition (various topics)

- **EDTC 5103** Advanced Computing Applications in Education
- **EDLE 5313** Characteristics of Adult Learners
- **CIED 5143** Language Arts in the Curriculum

#### **Cultural Studies:**

- **ANTH 5243** Globalization and Culture
- **PSYC 6393** Psychology of Language
- **SOC 5273** Qualitative Research Methods
- **ENGL XXXX** Any literature course approved for graduate credit (only one course allowed)

Courses other than those listed may be taken as electives if approved by the advisory committee.

#### **Methods Course for Teaching Assistants**

Teaching assistants must take an appropriate pedagogy course or courses in their first semester of teaching at Oklahoma State University. These hours may be counted as part of the total hours of course work.

#### **Required Hours at 5000/6000 Level**

All MA Students must complete at least 21 hours of course work at the 5000/6000 level; this 21 hours of course work may include six hours of credit for work on thesis.

#### **ENGL 5990: Special Problems**

Course limits enrollment (with permission from the Graduate Director) to those students who elect the creative component rather than thesis. The use of ENGL 5990 is restricted to those students who have completed course work and need to enroll in one or two hours in order to fulfill enrollment requirements.

#### **Transfer Hours**

Students may transfer up to nine graduate hours from another university granting a master's degree in English. A student's advisory committee shall determine the number of hours of transfer credit to be awarded. If a student uses the hours for a degree at the previous institution, the hours are not applicable to the MA degree at OSU.

#### **Independent Study**

Independent Study courses may be occasionally arranged with an instructor when no regular graduate course on the desired topic is available during the student's expected tenure. Each of the two course numbers (ENGL 5120 and ENGL 6120) may be used for up to six credit hours per semester and no more than nine hours total per course number. All students requesting an Independent Study course must hold a meeting with their advisory committee and receive approval by the members of the committee. Special forms must be used by those who wish to enroll in such courses. ***These forms are available on the forms page of the English Graduate website. This form should be submitted no later than the end of the first week of graduate enrollment period prior to the semester in which the Independent Study course is taken.*** A student who has completed the 17<sup>th</sup> graduate credit hour in a degree program but does not have an approved plan of study on file in the Graduate College may not arrange an Independent Study.

**The Graduate Studies Committee will evaluate applications for Independent Study in accordance with the following criteria and procedure:**

1. Has the student's advisory committee approved the course?
2. Has the student taken regularly offered courses related to the subject?
3. Is the Independent Study unlikely to have a negative impact on enrollment in concurrent or immediately subsequent course offerings?
4. Does the Independent Study fill a gap in the student's curriculum? Or is the specific course content unlikely to be offered during the student's expected tenure?
5. Are the materials clearly listed?
6. Is the work appropriate for the number of credit hours requested?
7. Is the list of assignments and percentages awarded to each clearly explained?
8. Is the schedule of conferences sufficiently specific?

If all eight questions may be answered affirmatively, the Graduate Director will send a written notice by email to the proposed instructor, who will then inform the student.

If one or more questions cannot be answered affirmatively, the Graduate Director will contact the proposed instructor in an effort to clarify and/or resolve the problem(s). If no resolution can be reached, the Graduate Director will inform the proposed instructor of the denial and the reason(s) for the denial in writing. The proposed instructor will then inform the student.

## End of Semester Evaluations

All graduate students will be evaluated in writing at the end of each semester by the professors with whom they have taken courses. ***These evaluations are kept on file in the English Graduate Office and are available for the students to read.***

## Grade of "Incomplete"

The following regulations apply to students who receive what at OSU is termed the "composite incomplete" grade ("IA", "IB", "IC", "ID", or "IF") for any of their course work within the English Department:

- Students must complete course work within one calendar year, after which time the preliminary grade (expressed by the second letter of the composite) becomes permanent in accordance with University policy. Individual faculty members, however, may establish a shorter time limit for completing course work. Faculty will identify the time limits in the "remarks" dropdown of the electronic grade sheet.
- Teaching assistants or associates having more than three incomplete grades on their records will not be recommended for reappointment.
- Teaching assistants or associates having any incomplete grades on their records will not be recommended for summer employment.

Students should familiarize themselves with Section 6.2 of the University Academic Regulations found in the ***University Catalog*** found here: <https://registrar.okstate.edu/University-Catalog> for a full explanation of University policy governing incomplete grades.

## Language Requirement

TESOL students must complete six hours of coursework in a language other than English with grades of "B" or better. Students who have not met this requirement at the time of admission must complete two semesters of language coursework, receiving grades of "B" or better, prior to defending their thesis/e-Portfolio. Non-native speakers of English are exempt from this requirement.

## Accommodations

If you have a disability and need accommodation, options are available. The Graduate Office will work with students and the Office of Student Accessibility Services to provide reasonable accommodation so that fair opportunities are available to perform on this exam. If you have not done so already, please advise the Graduate

Office of any access needs and potential beneficial accommodation.

### Thesis (optional)

Should the student choose to write a thesis, the thesis is expected to be a substantial research project on a topic related to teaching English as a second language, bilingual education, second language acquisition, second language testing or applied linguistics; it may be based on experimental research, may deal with a theoretical problem, or may have a pedagogical thrust. The thesis director should be a member of the TESL graduate faculty of the English Department.

### Prerequisites

In order to defend a thesis, whether traditional or e-Portfolio, students must:

- Have fulfilled the language requirement
- Have a grade point average of at least 3.0 on all graduate course work taken beyond the baccalaureate degree. *All courses carrying graduate credit, including transfer hours on the approved plan of study, will be calculated in this grade point average.*
- Have an approved plan of study on file with the Graduate College
- Submit a completed Intent to Defend form before the end of the second week of classes in the semester in which they intend to defend. (<http://english.okstate.edu/graduate-studies/graduate-forms>)
- Meet all Graduate College deadlines and requirements

### Traditional Thesis Format

This consists of 24 hours of course work, plus six hours of ENGL 5000: Thesis, leading to a traditional thesis and defense. The thesis is expected to be approximately 50-60 pages in length.

### Thesis Committee

Unless a student requests a change, the advisory committee serves as the thesis committee. If it is necessary to change the committee, a new committee form must be completed electronically on the Graduate College website: <https://gradcollege.okstate.edu/resources/current-student-resources.html> and notification provided to the English Graduate Office.

### Prospectus

*MA candidates writing a traditional thesis should submit a prospectus (approx. 1000 words) **no later than the first semester they are enrolled in thesis hours**.* The prospectus must be approved by the candidate's committee. Committee members must be notified in writing if an approved prospectus differs from the submitted thesis, (if, for example, the topic of the thesis changes or the authors or texts be treated are altered or the number or character of the chapters changes). Students must provide a copy of the approved prospectus to the English Graduate Director.

### Reading Procedure

At the time that the prospectus is approved, the candidate and the committee members should agree upon a reading procedure for the individual chapters or papers. Matters to be discussed in reaching an agreement might include which chapters and papers each member of the committee needs to see as they are completed by the candidate; whether the individual committee members wish to see the thesis or portfolio sections serially or all at once; and how much time committee members will need to finish reading a section or the entire thesis, ***Under no circumstances should a completed thesis be submitted to any committee member for reading fewer than two weeks before the defense.***

### Deadlines

Students submitting theses must adhere to the deadlines established by the Graduate College and by the English Department.



## Style

The student must write the thesis according to the guidelines in the current Graduate College Manual, available from the Graduate College or at: <https://gradcollege.okstate.edu/resources/current-student-resources.html> (thesis and dissertation guidelines).

## Defense Copy (Final Draft)

The defense copy of the thesis should contain **all** of the chapters in a completed form with full documentation.

## Final Copy

If, as a result of the defense, revisions to the thesis are required, committee members **will not** sign the thesis until they are satisfied with the revisions.

## Thesis Defense

A thesis defense will consist of a public oral examination by the thesis committee. It will be no fewer than 45 minutes but may be longer. The thesis defense occurs after the student has submitted a complete draft of the thesis or portfolio to all committee members.

## Intent to Defend Form

Candidates will file a nonbinding Intent to Defend form (found here: <http://english.okstate.edu/graduate-studies/graduate-forms>) with the Graduate Director before the end of the first two weeks of the semester in which they expect to defend the thesis. Each member of the committee will sign this form before it is filed with the Graduate Director. The date, time and room location must be arranged by the student. If a student does not defend in the semester when the Intent to Defend form is filed, he or she should resubmit the form when he or she is prepared to defend.

## Defense

Under no circumstance should a completed thesis be submitted to any committee member for reading fewer than two weeks before the defense. The English Graduate Office must be notified no less than two weeks before the defense of the date, time and location of the defense as well as title of thesis. The English Graduate Office must be informed of any changes in the scheduled defense date, time or location.

***No thesis defense will be held after the beginning of the summer session.***

## Graduation

Before being eligible to graduate student must have:

- Passed the oral defense of thesis and turned in the signed Results of Final Defense Form via the Graduate College portal here: <https://gradcollege.okstate.edu/resources/current-student-resources.html>
- Filed an Application for Graduation found here: <https://gradcollege.okstate.edu/resources/current-student-resources.html>
- Fulfilled the language requirement
- Updated Plan of Study if needed
- Submitted the final copy of the thesis in accordance with the format guidelines at: <https://gradcollege.okstate.edu/resources/current-student-resources.html>.

## Length of Financial Support for Teaching Assistants

A teaching assistant who has not been placed on strict academic probation and who is making

satisfactory progress toward the degree is eligible for financial support for a maximum of three years. A student who obtains an MA in English at OSU and then enters the PhD program is eligible for and additional five years of support.

If exceptional circumstances warrant, a student in the final year of financial support may petition the Head of the English Department for an additional year's support. Such exceptional cases will be judged on an individual basis and will consider the Departmental policies and staffing needs.

### **Ineligibility for the MA Degree**

The Graduate Director may upon proper cause declare a student ineligible for a degree from the English Department at Oklahoma State University. Upon determining that such cause exists, the Graduate Director will immediately notify the student's advisor, who will discuss the matter with the student and respond to the Graduate Director within fifteen working days. Should the Graduate Director still believe that proper cause exists, he or she will write a letter to the student indicating the reasons for the decision. The student may then appeal to the Graduate Studies Committee within ten working days for a hearing.

The Graduate Studies Committee will review the appeal and report its findings to the Graduate Director, who will notify the student. The student may then appeal that decision to the full Graduate Faculty of the English Department. The decision of that group shall end the Departmental appeal process.

### **Appeals and Petitions**

All appeals involving grades or charges of academic dishonesty, or misconduct must be directed to the OSU Academic Appeals Board. Contact the Provost's Office (101 Whitehurst) for information and forms. Petitions involving teaching assistantships must be directed to the Department Head.

All other petitions or appeals must be directed in writing to the Graduate Director, who will then forward the petition to the appropriate body, usually the Graduate Studies Committee (for special requests as described within the English Graduate Guidelines) or the English Graduate Faculty (for exceptions to English Department policy). The Graduate Director will notify students by mail of the decision reached by the Graduate Studies Committee or Graduate Faculty, with a copy to the student's advisor. For exceptions to university policy, the Graduate Director will forward the petition to the Graduate Council. Students are urged to discuss matters with their advisors and the Graduate Director **before** making a formal petition or appeal.

If the Graduate Director does not act upon a student's written request within a reasonable amount of time, a student and/or advisor may appeal directly to the Department Head. If a student has exhausted all appeals procedures within the Department and is still not able to resolve the problem, he or she may appeal to the Graduate College.

According to OSU policy, appeals pertaining to program requirements, plans of study, research grades, creative components, qualifying and comprehensive exam procedures, thesis and dissertation defenses, and program dismissals may be considered only on grounds that the department has failed to adhere to its own published rules or regulations or to those of the Graduate College or University. Faculty and advisory committee scholarly assessments are not appealable.

Students are first encouraged to seek informal resolution with the involved parties. Next, the formal appeals process has two stages: 1. Consultation with the Graduate Coordinator (or, if the Graduate Coordinator is an involved party, then with the Department Head or Associate Head); and 2. Graduate Faculty Hearing.

### **Consultation with English Department Graduate Coordinator**

Students must consult the Graduate Coordinator within 14 calendar days of the precipitating event to

determine whether prima facie grounds for an appeal exist. Here a student needs to demonstrate a) that specific rules or regulations have been violated, and b) that such violations have harmed the student. Following this consultation, if the student wishes to continue with an appeal, the next step is a hearing by the English Department Graduate Faculty.

### **English Department Graduate Faculty Hearing**

The English Department Graduate Coordinator will advise the student on preparation of a statement of appeal to be submitted within seven calendar days of consultation. Said document (no more than two pages, 12 point font, single spaced, 1" margins) should include information on the circumstances of the appeal, specific procedural issues involved, and remedial action sought; all supporting evidence is to be appended. The Graduate Coordinator will furnish the involved parties with the document, providing at minimum seven calendar days for their consideration before the matter is brought to the Graduate Faculty at its next scheduled meeting. The Graduate Faculty will decide the matter by a majority vote. The Graduate Coordinator will inform the student in writing about the outcome of the hearing. Involved faculty will be copied on this correspondence.

If this does not resolve the matter to the student's satisfaction, the student may appeal to the OSU Graduate College, per the OSU Graduate Student Appeals Policy.