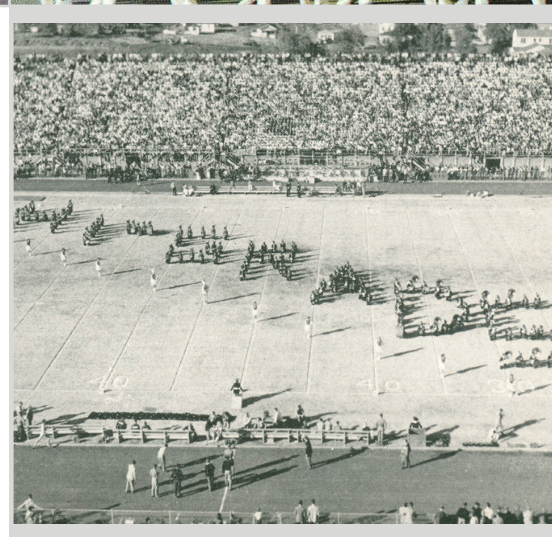


CMB GAMEDAY 2025



BAND WEEK 5 • OSU vs. CINCINNATI
OCTOBER 18, 2025

CMB GAMEDAY 2025

TABLE OF CONTENTS

GAMEDAY POLICIES	1
CMB THIS WEEK	2
SPOTLIGHT	4
GAMEDAY	6
SOUNDS OF THE GAME	8
THE COWBOY MARCHING BAND	10
BAND ROSTER	12
CMB STAFF	14
SPONSORSHIP	16
CMB SIGHTS	18
CONNECT	20

GAMEDAY ATTENDANCE AND MEDIA POLICIES

All CMB-controlled practices, rehearsals, and events, including those on gamedays with the exception of events in Boone Pickens Stadium, are open to the public. Media members who wish to schedule interviews, attend events for coverage, or record any events should contact Dr. Bradley Genevro or Prof. Allan Goodwin at least one week in advance to check availability and confirm scheduling. Please note that the Band Office may need to secure permission from event hosts for non-CMB controlled events, such as gameday events at the ConocoPhillips OSU Alumni Center or OSU Student Union, and may need to secure permission from the OSU Dept. of Brand Management regarding interview requests. These clearances may delay confirmation of scheduling.

On gamedays, when possible, the CMB will hold a gameday rehearsal. These will be held in Boone Pickens Stadium when available, but location is subject to change due to game operations scheduling. Media members who wish to attend should contact the Band Office to confirm time and location.

Media members and content creators are **strongly** encouraged to consult with the Band Office before posting stories or content online, especially to social media sites such as Instagram, YouTube, TikTok, etc., to help avoid any issues related to copyrights, licensing, synchronization, mechanical conflicts, or other rights that may arise and result in the disabling of content posts.

For home games, CMB performances within Boone Pickens Stadium as part of Cowboy Football gamedays are subject to OSU Athletics policies regarding ticketing and media access. Members of the public who wish to observe these performances must have a ticket to the game to gain entry; prospective CMB members interested in attending the games should contact Dr. Bradley Genevro or Prof. Allan Goodwin about the CMB Gameday Guest program.

Members of the media who wish to follow the CMB at home games must follow the credentialing process set by OSU Athletic Communications. For more information about this process, visit okstate.com/media, consult the 2025 Cowboy Football Media Guide, or contact Gavin Lang, Associate AD for Communications, at gavin.lang@okstate.edu.

For away games, the Big 12 Championship, and any bowl games, persons are subject to ticket and media access policies of the host institution or venue. Policies for CMB events at these sites will be made available in advance when possible.

CMB THIS WEEK

HALFTIME PRESENTATION: HOMECOMING 2025

This week, the Cowboy Marching Band presents its 2025 Homecoming program! Featuring both new and longtime favorite western-themed songs, the show will also explore the history of OAMC/OSU logos in the visual presentation, designed this week by second-year graduate student Mason Martinez.

The opening number is a song that has quickly gained a prominent place in OSU's gameday atmosphere across multiple sports and in the fabric of country music in the state since its release in 2024. ***Ain't No Love in Oklahoma*** was recorded by Luke Combs for the soundtrack to *Twisters*, the sequel to the 1996 film *Twister* that, like the original, was both set and in part shot in Oklahoma. The song became Combs's 18th No. 1 hit on the *Billboard* Country Airplay chart and was a Top 15 hit on the *Billboard* Hot 100.

The performance continues with a classic theme from the world of professional football. The look, narration, and music of NFL Films are all icons of sports media, and ***Round-Up*** is a key work in the music medium. Written by longtime NFL Films composer Sam Spence, *Round-Up* was featured in many NFL Films productions through the years. Its western sound was used to create an exciting mood in a wide variety of highlight films, particularly for sections showcasing big plays, which helped make it one of the most recognizable pieces of music in the NFL Films canon.

The program closes with a favorite piece of the CMB through the years: ***The Magnificent Seven***. Written by Elmer Bernstein, the theme to the film of the same name is one of the most famous and lauded pieces of film music ever written. Bernstein's score, including this theme, was nominated for an Academy Award and was included on the American Film Institute's list of the top 25 film scores in American cinema. In this program, the CMB presents a new arrangement of the theme by Prof. Allan F. Goodwin.

CREDITS FOR HOMECOMING 2025:

Wind Arrangements	Allan F. Goodwin
Percussion Arrangements	Wayne Bovenschen & Caleb Tonini
Color Guard Choreography	Tori Williamson
Feature Twirler Routines	Aly Akers Meadors
Drill Design	Mason Martinez

EVENT SCHEDULE - WEEK 5

OCTOBER 18, 2025

9:00 AM	Sea of Orange Parade, Downtown Stillwater
3:45 PM	Eskimo Joe's Band Performance
4:00 PM	Pistol Pete Roll Call Performance
4:15 PM	Alumni Center Performance
4:50 PM	The Walk at OSU Student Union
5:40 PM	OSU Drumline at Bartlett Center
6:00 PM	Orange Power Pep Rally / Pregame Concert at Bartlett Center
6:15 PM	Parade to Boone Pickens Stadium
6:43 PM	Pregame Performance at Boone Pickens Stadium
7:00 PM	Kickoff - OSU vs. Cincinnati
Postgame	Postgame Concert in stands as crowd departs (<i>weather permitting</i>)

NOTE: For the protection of our students and equipment, the CMB will exit Pregame into the stadium tunnels and re-enter the stadium on the concourse at Gate 4. We appreciate our partners at OSU Athletics working with us to prioritize student safety!

WEEK 5 NOTES

- The CMB will lead off the Sea of Orange Parade on the morning of October 18. The parade is scheduled to begin at 9:00 AM in downtown Stillwater and will travel along Main Street from 9th Avenue north to Hall of Fame Avenue. The event will be livestreamed beginning at 8:30 AM on the OSU Youtube channel at www.youtube.com/@okstateu/streams.
- The CMB will send a pep band to Lubbock, TX next week for the OSU vs. Texas Tech football game. The next full band performance will be at the OSU vs. Kansas game in Lawrence, KS for the band's annual full band trip.
- Graduate student **Jesus Escobar** joined the CMB's graduate assistant group prior to the Houston game and will be with the band for the remainder of the season.
- In cooperation with OSU Athletics, the graphic and video presentations introducing CMB performances have been updated and enhanced for this season! More than a dozen CMB members took part in a series of video shoots with Orange Power Studios to produce exciting new intro videos. Make sure you catch the videos each game - halftime intros will change every week!
- For the first time in many years, the CMB staff and OSU Athletics collaborated in a coordinated review of the entire pregame production for Cowboy Football. These efforts have resulted in the addition of an exciting new OSU Pom Squad feature and the CMB's "Run-On," still with its traditional gallup step and cadence, has been accelerated to create a more energetic opening to Pregame.
- Additionally, the CMB and OSU Athletics are coordinating more closely to match marching show themes with athletic marketing efforts to create a more unified and cohesive gameday experience.

SPOTLIGHT

SPONSOR SPOTLIGHT:

EDWARD E. AND HELEN T. BARTLETT FOUNDATION

This week, the Cowboy Marching Band's halftime performance is graciously sponsored by the Edward E. & Helen T. Bartlett Foundation as part of the CMB Sponsorship Program.

The Edward E. and Helen T. Bartlett Foundation has supported OSU since the 1960s through various scholarships and endowments across campus. Gifts from the foundation have endowed five faculty chairs across campus, supported construction of both the McKnight Center for the Performing Arts and the Greenwood School of Music building (including the naming gift for the GSM's large rehearsal hall), and provided scholarship support for numerous students.

The Bartlett Foundation has a long history of support of the Cowboy Marching Band. Financial gifts to the CMB have helped enhance the student experience for a number of years, including, among other initiatives, special activities on bowl trips for CMB members to enjoy a similar experience as other university groups. In a statement, a trustee said "it is important to support the CMB because it is part of the face of the university and its members span across all academic colleges. Gamedays and Cowboy sports experiences would not be the same without (the CMB)."

The foundation also supports initiatives at the OSU Institute of Technology, the University of Oklahoma, and the University of Tulsa, as well as public education and community organizations in the Tulsa metropolitan area through the awarding of various grants and scholarships.

Members of the foundation's Board of Trustees - three of whom are Cowboy Marching Band alumni - will represent the Bartlett Foundation at the OSU/Cincinnati football game.

The Cowboy Marching Band extends its sincere thanks and appreciation to the Edward E. & Helen T. Bartlett Foundation for its support of this halftime program, and for all of its past, present, and future support of our students!



CMB alumni and Bartlett Foundation trustees Sarah Bartlett and Trey Bartlett with Dr. Bradley Geneviro, Prof. Allan Goodwin, and Prof. Jeremy Smith at the 2024 OSU/Arkansas game.

SPOTLIGHT: HOMECOMING

What began as a small town harvest carnival at the beginning of the twentieth century has evolved into what is now "America's Greatest Homecoming Celebration." Along the way, with the support of the OSU Alumni Association and the efforts of the student body, OSU's Homecoming has grown into a week-long spectacular that draws tens of thousands of alumni, family and friends back home to Stillwater each fall.

OSU's very first Homecoming was held as part of the Harvest Carnival in the fall of 1913, but it wasn't until seven years later that the OSU Alumni Association hosted its first official Homecoming celebration. On October 30, 1920, 90 Oklahoma A&M alumni returned to Stillwater for festivities including the Aggie football game plus a dance and a dinner hosted by Alumni Association President Monroe Otey.



Of the 90 alumni in attendance, 50 were from the Stillwater area and 40 were from out of state. It was also in the '20s the now-famous tradition of house decorations began when sororities started to decorate their doorways.

In 1930, the first-ever Homecoming Parade, a mile long, made its way down Main Street. More than 17,000 alumni returned to Oklahoma A&M that year to renew old friendships and show their pride in the Orange and Black.

In 1942 and 1944, Homecoming was combined with Dads' and Mothers' days and sponsored by the YMCA, YWCA, Dads' and Mothers' Day Association and the Alumni Association. The combination was a result of World War II and impending gas rationing. Even with the gas rationing and cutbacks on parade floats, decorations, and visiting bands, the football game and reunion functions were still well attended.

Following the war in 1946, there was a record attendance of 20,000 alumni and the largest parade was held including more than 50 floats, six bands and other community entries. Over time, the size of the house decorations overtook those of parade floats. In 1966, vehicles were abandoned and onlookers tried a new experiment - they simply "walked around" to view the decorations. Three years later, house decorations began being judged and scored.

New events like the Sign Competition, Football Frenzy and Chili Cook-Off were added in recent decades. The event has grown and today is recognized as "America's Greatest Homecoming Celebration," drawing more than 80,000 alumni back to campus each year.

CASE International (Council for Advancement and Support of Education) has recognized OSU's Homecoming as a Seal of Excellence recipient. This is the highest award given by CASE in the field of Alumni Relations. This prestigious award is given only to programs that serve as models for others. OSU was recognized for the widespread participation and outstanding organization of its Homecoming program.

OSU's Homecoming is presented by the OSU Alumni Association and is planned by the student-driven Homecoming Executive, Steering and Big committees. OSU's Homecoming is a longstanding, exciting and colorful tradition for both campus and community.

Reprinted from okstate.edu and orangeconnection.org.

CMB GAMEDAY

GAMEDAY REHEARSAL

When possible, the Cowboy Marching Band begins home game Saturdays with a morning rehearsal to make final preparations of the day's pregame performance and halftime show. While times and locations for these rehearsals vary due to game start times, each rehearsal (excluding those in Boone Pickens Stadium) is open to the public.

OSU ALUMNI ASSOCIATION COWBOY CORRAL PEP RALLY

Each home game, one of the CMB Pep Bands helps get Cowboy fans ready for the contest at the OSU Alumni Association's Cowboy Corral Pep Rally, held each gameday at the ConocoPhillips OSU Alumni Center. These family-friendly events feature local-favorite food and drink, picture opportunities with Bullet the Spirit Horse, the Cowboy Corral outdoor gathering area, and more. The Pep Rallies are open to the public and begin 30 minutes before the start of The Walk.

STUDENT UNION ACTIVITIES BOARD SPIRIT WALK

The Walk is one of OSU gameday's most recognized and anticipated events. Introduced in the 2001 season, The Walk marks the start of the unofficial countdown to kickoff each day. Two hours before the scheduled start of each game, the Cowboy football team leaves the Student Union to walk north on Hester Street to Boone Pickens Stadium accompanied by the Cowboy Marching Band and OSU Spirit Squads, and surrounded by the OSU faithful. The CMB pep band that performs at the OSU Alumni Center each week meets the OSU Drumline at the intersection of Hester and Morrill to begin the Walk, and then the Drumline helps lead the football team to the stadium before meeting up with a second pep band at the stadium entrance to play as the team enters to begin game preparations.



GAMEDAY PEP BANDS

The CMB divides into three 100+ member pep bands on gamedays to perform for various events on and near campus prior to the start of each game, including the OSU Alumni Association Pep Rally, The Walk, and at Stillwater's world-famous Eskimo Joe's. These bands have also performed for gameday crowds on Campus Corner and for the numerous Cowboy football fans who gather for tailgating prior to kickoff. "Traveling" bands have even been known to visit the fans in the club and suite levels of Boone Pickens Stadium during games! Parties interested in hiring a pep band on gameday should contact the Band Office.

ORANGE POWER PEP RALLY PREGAME CONCERT

After The Walk, all CMB pep bands regroup to organize for the game and take final warm-ups before the Orange Power Pep Rally pregame concert. The CMB's program begins one hour before the scheduled kickoff time each week, with the OSU Drumline holding outdoor warm-ups prior to the band's arrival and a short performance as the band arrives and moves into position. Each week, the Orange Power Pep Rally fires up fans with a performance of the pregame show music and a preview of the week's halftime show. The Orange Power Pep Rally is held each week in front of the Bartlett Center for the Studio Arts.

PARADE

Immediately following the conclusion of the Orange Power Pep Rally, the Cowboy Marching Band lines up in its parade block formation for the march to Boone Pickens Stadium. As the CMB marches, the OSU Drumline performs The Series, the "street beat" cadence that has become a CMB tradition. Introduced in 1995 and written by percussion director Wayne Bovenschen, The Series is one of the familiar sounds of OSU gameday and a signature of the CMB at various events. On gamedays, one might see the sections of the CMB performing different dances or maneuvers at various points in the cadence, each unique to those sections. After each complete performance of The Series, the CMB will perform either a medley of "Ride 'Em Cowboys" and "OSU Chant" or the state song "Oklahoma" to keep fans' spirits up as they follow the band to the stadium.

SOUNDS OF THE GAME

The Cowboy Marching Band and the OSU Drumline perform a number of selections, “stand shorts,” and percussion cadences that have become part of the fabric of OSU game days, as well as new selections to keep the band’s sound fresh at Boone Pickens Stadium. The following is a sampling of what fans can expect to hear throughout the 2025 season.

SONGS

Fanfare 1992
Oklahoma
OSU Alma Mater Hymn
OSU Chant
Ride ‘Em Cowboys
Rock and Roll
The Trilogy (*Waving Song/Ride ‘Em Cowboys/OSU Chant*)
The Waving Song

PERCUSSION CADENCES

B-Ville
Bluelight Special
Defense
Drumline
Drumming
Football
Martian Mambo
Run-On
X

STAND SHORTS & TUNES

Dies Irae
Eat ‘Em Up
The Hardline
Holiday (*Green Day*)
Humble
Immigrant Song
Look Down
Mortal Kombat
Oklahoma! short
OSU Chant short
Poison (*Bell Biv DeVoe*)
Requiem (*Giuseppe Verdi*)
Ride ‘Em Cowboys short
Spain (*OSU Tuba Line arrangement of “Never Been to Spain”*)

OSU SONG LYRICS

THE WAVING SONG

Music by Victor Herbert

Lyrics by H. G. Seldomridge

Oklahoma State! Oklahoma State!
We’ll sing your praise tonight;
To let you know, where-e’er we go,
For the Orange and Black we’ll fight!
We’ll sing your worth o’er all the Earth
And shout: KI! YI! KI! YE!
In books of fame we’ll write your name,
Oklahoma State!

OSU CHANT

Music and Lyrics by Don V. Joseph

GO! GO! GO POKES! GO POKES! GO POKES GO!

O! S! U!

O-S-U,
the greatest in the nation,
O-S-U,
the school that’s got the Go Spirit and the will to win,
Make a score and we’ll shout: Beat (opponent)!
O-S-U,
it’s Orange and Black we’re cheering
on to vict’ry today,
O-K-L-A-H-O-M-A
State!
Univer-si-ty!

RIDE ‘EM COWBOYS

Music by John K. Long

Lyrics by Edgar Ward

Ride ‘em Cowboys, EEEE-YAH!
Ride ‘em Cowboys, EEEE-YAH!

Ride, ride, ride, ride,
Ride ‘em Cowboys, right down the field!
Fight! Fight! Fight! Fight!
Fight ‘em Cowboys, and never yield!
Ride, ride, ride, ride,
Ride on, Cowboys, to victory;
Cross (opponent)’s goal;
Then we’ll sing ‘O-kla-homa State!’

ALMA MATER HYMN

Music and Lyrics by Robert McCulloh

Proud and immortal,
Bright shines your name;
Oklahoma State,
We herald your fame.
Ever you’ll find us
loyal and true,
To our Alma Mater,
O - S - U.

THE COWBOY MARCHING BAND

The Cowboy Marching Band is the largest performing ensemble in the Oklahoma State University band program. Over 300 students from colleges and degree programs all over campus, from multiple states and countries, and from varied musical backgrounds come together to perform a variety of musical selections and visual programs each year as part of one of the largest student organizations at OSU.

As an athletic band program, the CMB supports Cowboy Football at each home game, in-state away games, select other away games, and bowl games each year. Pep bands often travel to support the team when the full CMB does not. Outside of athletic contests, the CMB and its component groups can be spotted performing at various university functions.

The CMB performs a variety of music in its shows to appeal to a wide range of audiences. Past programs have featured military marches, classical music, contemporary pop hits, classic rock, country music, Broadway show tunes, cartoon themes, video game music, Latin jazz, and more. The CMB utilizes multiple styles to present an engaging visual product; words, picture images, military blocks, asymmetrical drill, and other techniques are used to help bring exciting visual interpretations to the musical selections.

The CMB traces its history to a student-led group founded in 1905 that bought its own uniforms and hired its own director. Since then, it has become a group known for its musicianship, enthusiasm, and overall quality, and the memories made as part of the CMB are cherished by generations of alumni, friends, and fans. The shared experience of so many and the role the CMB plays at OSU have made "The Spirit of Oklahoma State" more than a nickname.

It is a statement of purpose.

CMB 2025

DRUM MAJORS

Grace Fenstad
AJ Genevro
Megan Kraus
Bryce White

FEATURE TWIRLERS

Callan Hall
Jaidyn Poole

PICCOLOS & FLUTES

Joseph Aiello
Megan Engelman
Cristian Garcia***
Sylvia Gonzalez
Hannah Graham
Kayla Hamblin
Campbell Hansard
Audrey Hardgrave
Andrew Hunt
Sarah Johnson^^^
Savannah Jones
Jada Jones
Danasia Mitchell
Madison Patswald
Emily Paul
Megan Phillips
Karsen Riley
Riley Styers
Aaerial Tankxley
Isabella Trevino***
Kaylin Tucker
Preston White
Addison Willey
Madison Williams
Moira Wright

CLARINETS

Brooke Baker
Dana Banuet
Megan Blair
Mikayla Boganwright
Ellissia Bonidie
Laney Brown
Braxton Cyrus
Addison Dedeluk
John DuRard
JT Erickson
Frida Gonzalez
Sydney Goss
Samantha Guernsey
Van Ho
Angelina Jacobson***
Jacey Jordan
Mykaela Johnson
Addison Kilmer
Colton Livingston
Emma McCraw
Alexandra McIntosh
McKinley Mendes
Corinne Mills
Kennedy Orr
Katelyn Persson
Zoe Rampey
Eric Renner***
Becca Schlect
Elizabeth Schuknecht
Savannah Skelton
Brett Smith
Kallie Swafford
Makayla Vanston
Charles Wilson
Elli Winbolt
Lily Young

ALTO SAXOPHONES

Charity Bernard
Jake Berry
Sophia Blake
Damia Boller
Jantz Brandon***
Chad Chancellor
Steven Cheater
Parker Cole
Emma C. Collins
Mercy Burkett Dearhamer
Marinah Dodd
Colin Greer
Jaemin Griswold
Jager Johnson
Joshua Martin
Nicolas McCarty
Hayden Melton
Grant Myers
Madeline Naugle***
Nicolas Perez
Carson Pitts***
Holly Rasband
Noah Schmidt
Peyton Shannon
Trace Speth
Elizabeth Swindell
Clayton White

TENOR SAXOPHONES

Magen Bobbitt
Conner Bowling
Kaitlynn Branco
Carlton Buckels
Brighton Clifton
Nell Farrington
Dylan Harris
Christopher Helm
Macie Juarez
Mallory Lowry
Emma Nair***
Cristian Saenz
Katherine van Heerden
Kyra White^^^

MELLOPHONES

Noah Bennett
Katelynn Biggs***
Hallie Clark
Emma G. Collins
Finley Culver
James Dowd
Antonio Gomez
Rylee Hamilton
Charlie Harris***
Taylor Isom
Cat King
Parker Kluver
Natalie Koepp
Maxwell Kraft
Ayson Lanham
Katelynn Lewis
Caroline Ligon
Andrew Lozano
Ryan Manning
Dylan McCormick
Brady Moreland
Madison Morgan
Casey Reilly
Nathan Revor
Emily Richardson
Enrique Rosa-Berrios
Jackson Rowe
Katherine Rush
Nicholas Sewell
Jade Taylor^^^
Celeste Thelen
Campbell Thiel
Reece Tuell
Harrison Wood
Charlie Young

TRUMPETS

Addison Ault
Nicholas Baatz
Greer Baskin
Luke Baustert
Cohen Beard
Jace Berry
Joe Black
Daniel Blackwell
Berkley Bloskovich
Scott Brady
Hannah Brunn
Nathan Contreras
Ethan Coughran
MacGuire Daniels
Travis Dick
Emily Dickey
Parker Dwigings
Jadyn Dykstra
Maddie Eberle
Aidan Evano
Cadence Frazier
Emery Fuxa
Koby Goree***
Griffin Goss
Noah Grantham
Cadee Griffith
Savannah Hamblin
Travis Holmes
Brady Kaase
Brenley Karnes
Luke Laughlin
Carter Lowry
Vivian Lyne
Hayden Martens***
Gabriel McDonnell
Jackson Morris
Josiah Morris
Connor Munro
Jessica Pearce
Mason Prado
Andrew Ross
Aidan Shelton
Parker Shields
Logan Showalter
Matus Starry
Tia Stretch
Caleb Sylvester
Stetson Turnbeaugh
Nathan Varghese***
Jacob Wilson
Kylie Wright

TROMBONES

Jeremiah Adams
Rylie Anderson
Jeremy Black***
Carter Blackmon
Carter Calk
Austin Chown
Timothy Christensen
Ethan Christianson
Brayden Colon
Hudson Cox
Addison Crawford
Gage Crews
Jaxon Davis
Peyton Deel
Jacob Freeman
Destini Gonzales
Cahill Kirkpatrick
Harlee Lowery
Peyton Moery
Lance Myer
Peyton Norton***
Joseph Osgood
Jonathan Perez
Aiden Propp
Richard Robertson
Jadda Rodriguez
Ryan Shannon
Logan Torres
Garrett Viets
Adam Vorhaben
Arleanah Williams-O'Leary
Wesley Winn
Braden Zeder

BARITONES

Kade Bellamy
Todd Bumgarner
Daniel Clark
Cadence Ewell
Max Johnson
Brady Lawhorn***
Jacob McClary
Emmanuella McCrahan
Luke McLaren
Noah Osborn
Logan Pardue
Renee Rauls
Mitchell Robinson***
Ryan Ruston
Eli Sandefer
Emma Swanson
Dakken Thurston
Pierce Todd
Mathew Van Dam
Joshua Varon
Laci Wright

SOUSAPHONES

Aiden Collins
Austin Cone
Audrey Dalsing
Ridgely Hancock
William Houseworth
Jackson Lafferty
Sebastian Lanuza
Benjamin Ley
Luke Matthews***
Brysun Paddock***
Arnold Parker
Chase Pontius
Grace Rutherford
Jake Schirmer
Matthew Stockton
Jude Turkett
Haylie Williamson^^^

DRUMLINE

Snare Drums

Parriss Atchison
Ella Atkins
Carsten Kinzie
Erick Leos
Cody Moss
Nicholas Platon
Luke Rogers
Conner Sigrist***
Zachary Smith

Tenor Drums

Andrew Buss
Jacob Dunn
Ademir Hall
Connor Westcott
Stephen Whiting***

Bass Drums

Dalon Heath
Ian Humphreys
Garrett Irwin
Corynn Lawless***
Justyn Paul
Nash Santangelo
Jacob Stapp

Cymbals

Lauryn Field***
Ryan Johnson
Ryan Ponder
Xavier Rogers

FRONT ENSEMBLE

Kenslee Alaniz
Landon Banning
Reba Cross
Alyssa Durham***
Braden Keith
Talon Oliver
Nani Takahashi

COLOR GUARD

Veronica Brewer***
Sarah Burks^^^
Cadence Buss
Kalynn Dexter-Taylor
Kaitlyn Delaney***
Natalie Gay
Noah Greene
Lydia Harris
Kaelyn Hogrefe
Allyssa Jennings
Naomi Johnson
Blake Kleinknight
Makenna Larsen
Janessa Landolfi
Briley Lockwood
Savannah McClure***
Sydney Mohr
Jordyn Owens
Emani Panchal
Michelle Raley
Madison Sasser
Makenzie Savage
Lacy Sumner
Edie Tillery
Addison Webb
Emily Williams

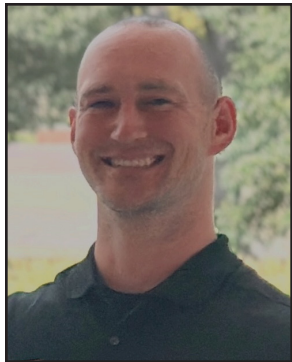
*** denotes Section Leader
^^^ denotes Advisory Committee/
Undergraduate Staff

Roster as of 10/13/25

CMB STAFF



ALLAN F. GOODWIN
Director
Associate Director of Bands



DR. DANNY BROCK
Assistant Director
Assistant Director of Bands



WAYNE BOVENSCHEN
Drumline/Front Ensemble
Professor of Percussion



DR. BRADLEY GENEVRO
Director of Bands
Associate Director,
Greenwood School of Music



CHUCK LESTER
"The Voice of the
Cowboy Marching Band"



ROBIN HERROD
Photographer



GAYLIN WASHAM
Social Media Coordinator



CLINTON WIEDEN
Print Media Coordinator



VICTORIA WILLIAMSON
Color Guard Instructor



ALY AKERS MEADORS
Twirling Coordinator



WILLIE VEENSTRA
Visual Designer



CALEB TONINI
Graduate Assistant
Third Year



MASON MARTINEZ
Graduate Assistant
Second Year



ASHLYNN CANLER
Graduate Assistant
First Year



TIA CHERNOW
Graduate Assistant
First Year



DIANNE HOLBA
Senior Administrative Assistant
OSU Bands



MONICA SANTILLAN-SALINAS
Coordinator of Auditions, Outreach,
and Community Engagement
Greenwood School of Music



HAYLIE WILLIAMSON
Logistics Coordinator



GABE COWLES
Graduate Assistant
First Year



JOSHUA JONES
Undergraduate
Percussion Assistant

Not Pictured: Jesus Escobar, First-Year Graduate Assistant

SPONSORSHIP

THANKS TO OUR 2025-26 CMB SPONSORS:

Bartlett Foundation

Stacy Heath

Pam & Gary Lanman

Bob & Pam Spinks

**as of 10/13/25*

CMB SPONSORSHIP PROGRAM

To show their support, loyal and true friends of the Cowboy Marching Band can now sponsor the band's halftime appearances, instrument sections, and more! As a CMB Sponsor, you'll be supporting all the activities of the band, all year long. It is only because of the support of friends like you that we can maintain our high level of musical and visual excellence! Donations through this new program will directly impact our students by ensuring support for equipment, instrument maintenance, professional music & drill, uniforms, and wraparound services for band students. Donations will be directed to the Cowboy Band Fans Fund (22-84700) and donors will receive priority notification for sponsorship in future seasons. Don't delay - sponsorships are limited!

Sponsorships are available at the following levels:

\$10,000 - Individual Halftime Sponsorship

\$7,500 - Season-long Section Sponsorship

\$2,500 - Gameday Experience Sponsorship

\$500 - Individual Student Sponsorship

More information about the program, including the benefits of each sponsorship level, can be found at philanthropete.osugiving.com/project/42972, or by contacting Dr. Bradley Genevro at bradley.genevro@okstate.edu.

OSU FOUNDATION



Every gift to the Cowboy Marching Band helps shape both the student and fan experience! From scholarships and instruments to unforgettable performances on game day and beyond, your support strengthens a proud OSU tradition and inspires excellence in every step. Your generosity shows our students that they have the support of a community, and echoes through every rehearsal, halftime show, and lifelong memory created on and off the field.

Donations to the Cowboy Marching Band are received and managed by the OSU Foundation, the official nonprofit partner of Oklahoma State University. To learn how you can make a lasting impact on OSU Bands and the Greenwood School of Music, contact Taylor Buxbaum, Senior Director of Development and Team Lead, at tbuxbaum@osugiving.com.

CMB SIGHTS - HOUSTON

PHOTOS BY **ROBIN HERROD**



CMB members getting the crowd pumped up at the Alumni Center



Social Media Coordinator Gaylin Washam and senior bass drummer Justyn Paul share a laugh



Moving downfield in Pregame



CMB at rest awaiting the team entrance



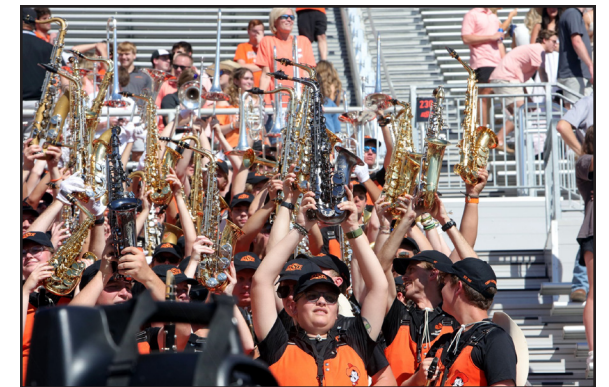
Twirlers Jaidyn Poole and Callan Hall leading the audience at the Pregame Concert



Looking out over the Pregame Concert



Supporting the Cowboys and pushing energy to the crowd...



...and keeping things fun despite the heat!



Drum Major AJ Geneviro says "Go Pokes!"



Trombone section members enjoying the parade to the stadium



The CMB forms a pair of boots in celebration of the "Roots and Boots" theme



The tuba section joined the joyful mayhem of Section 231 to perform "Spain"

CONNECT

ONLINE

Website: cmb.okstate.edu
Facebook: facebook.com/ostatecmb
Instagram: instagram.com/@ostatecmb
YouTube: youtube.com/@osubands

Section & Student Group Instagram Accounts

Twirlers	@osu_featuretwirlers
Color Guard	@ostatecmbcg
Flutes	@cmbflutes
Clarinets	@cmbclarinet
Saxophones	@cmbaxes
Mellophones	@cmbmellos
Trumpets	@okstatetrumpets
Trombones	@cmbtrombones
Euphoniums	@cmb.baritone
Sousaphones	@the.ostl
Percussion	@okstate_percussion
Snare Drums	@okstatesnares
Bass Drums	@cowboy.bass
Cymbals	@okstateplates
Front Ensemble	@pistolpetespit
Kappa Kappa Psi	@kkpsi_alpha
Tau Beta Sigma	@tbs.alpha

JOIN US!

Interested in joining the CMB? Visit music.okstate.edu and check out the information about CMB auditions. Whatever your major or previous experience, CMB auditions are open to every student on campus. There are even financial aid opportunities available! If your questions aren't answered by the website, e-mail gsmauditions@okstate.edu or contact the Band Office.

Prospective CMB members and school band groups can also join the CMB on gamedays! For more information about our Gameday Guest program, contact Dr. Bradley Genevros or Prof. Allan Goodwin.

Got other questions? Let us know at the contacts below!

E-MAIL CONTACTS (all addresses @okstate.edu)

General Address	osubands
Dr. Bradley Genevros	bradley.genevros
Prof. Allan F. Goodwin	allan.goodwin
Dr. Danny Brock	danny.brock
Prof. Wayne Bovenschen	wayne.bovenschen
Dianne Holba, Sr. Admin. Asst.	dianne.k.holba

OFFICE PHONE (405) 744-3165

MAILING ADDRESS 102 GSM
Oklahoma State University
Stillwater, OK 74078

PHYSICAL ADDRESS 325 GSM, OSU Campus

Oklahoma State University (OSU) is committed to maintaining a learning environment that is free from discriminatory conduct based on race, color, religion, sex, sexual orientation, gender identity, national origin, disability, age or protected veteran status. OSU does not discriminate on the basis of sex in its educational programs and activities. Examples of sexual misconduct and/or sex discrimination include: sexual violence, sexual harassment, sexual assault, domestic and intimate partner violence, stalking or gender-based discrimination. OSU encourages any student who thinks that he or she may have been a victim of sexual misconduct or sexual discrimination to immediately report the incident to the Title IX Coordinator. Students may also report incidents of sexual misconduct or sex discrimination to a faculty or staff member, who is then required by federal law (Title IX) to notify the Title IX or deputy Title IX Coordinator. If a reporting student would like to keep the details confidential, the student may speak with staff in the Student Counseling Center (405-744-5472) or with the university's Victim Advocate (405-564-2129). For more information regarding Title IX violations, go to 1is2many.okstate.edu. This publication, issued by Oklahoma State University as authorized by the Greenwood School of Music, was printed at no cost to the taxpayers of Oklahoma.

2025 Equipment Partners



YAMAHA



EASTMAN



2025 Equipment Vendors



CONN  SELMER



UMB ULTIMATE
DRILL BOOK



BAND
TODAY

2025 CMB SCHEDULE

AUG. 5-8	PRESEASON PERCUSSION CAMP	STILLWATER
AUG. 8-17	PRESEASON CAMP	STILLWATER
AUG. 28 (Thurs.)	OSU vs. UT-MARTIN	STILLWATER
SEPT. 12 (Fri.)	McKNIGHT CENTER PEP RALLY SERIES	STILLWATER
SEPT. 19 (Fri.)	OSU vs. TULSA	STILLWATER
SEPT. 27	OSU vs. BAYLOR <i>Alumni Band Weekend</i>	STILLWATER
OCT. 3 (Fri.)	McKNIGHT CENTER PEP RALLY SERIES	STILLWATER
OCT. 11	OSU vs. HOUSTON	STILLWATER
OCT. 18	OSU vs. CINCINNATI <i>Homecoming</i>	STILLWATER
OCT. 25	OSU at TEXAS TECH <i>Pep Band Trip</i>	LUBBOCK, TX
NOV. 1	OSU at KANSAS <i>Full Band Trip</i>	LAWRENCE, KS
NOV. 15	OSU vs. KANSAS STATE	STILLWATER
NOV. 16 (Sun.)	CMB IN REVIEW at McKNIGHT CENTER	STILLWATER
NOV. 29	OSU vs. IOWA STATE <i>Senior Day</i>	STILLWATER
DEC. 6	BIG 12 CHAMPIONSHIP	ARLINGTON, TX
DEC. 13-JAN. 19	BOWL GAME	TBD

Schedule as of August 1, 2025. Performance schedule subject to change.